

Great Day! Scheduled Tour Summary

IT'S SHOWTIME AT THE HARD ROCK ROCKSINO . . . 3 DATES IN 2019

Departures, as applicable, from Westlake, Elyria, North Olmsted, Middleburg Heights, Independence, Beachwood.

Why settle for just a trip to the Hard Rock Rocksino when Great Day! Tours gives you three dates to select from . . . and each has the Rocksino, a great show to enjoy, plus a \$20 bonus! Enjoy one, or all three, shows in March, June and September.

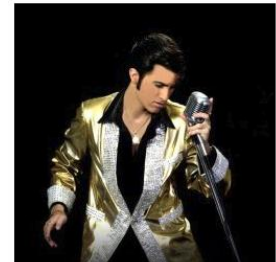
Thursday, March 28, 2019 Tour . . . Starring the **Geeze Cats Doo-Wop Group**. This group has also performed at our company parties on several occasions, so we can assure you that we think they are great. They perform a delightful mixture of rock 'n' roll, doo-wop, and improv comedy.



Tuesday, June 25, 2019 Tour . . . Again, this group has performed for Great Day! Tours' Holiday Party twice over the years and we want to take you to see why we believe that **Eddie & The Edsels** are such great entertainers. Enjoy this group, as we have, that also performs in Vegas and different venues in Florida.



Thursday, September 26, 2019 . . . This third show is equally as spectacular. It's the world-renowned **Kavan – The World's # 1 Rock 'N' Roll Elvis**. Kavan is a nationally-recognized Elvis Tribute Artist. Music includes the '50s rockabilly years, the '60s movie years including the 1968 comeback and the 70s Vegas years.



SHOWTIME AT THE HARD ROCK ROCKSINO – 3 DATES IN 2019



\$44 per person

All passengers must be at least 21

We accept all major credit cards and checks or stop into our office.

Tours can now be booked online, 24 hours a day with a credit card.

GREAT DAY! TOURS & CHARTER BUS SERVICE . . . (440) 526-5350 . . . (800) 362-4905

All tour details are anticipated at the time that the Scheduled Tour Brochure was prepared and specific stops and/or other inclusions are subject to change or elimination without notice. Tours typically depart between 6 AM and 8 AM with the exact time shown on the itinerary you will receive approximately one to two weeks prior to the tour departure. Most tours return about 8 PM to 10 PM, although this may vary.